



NetSol Technologies North America, Inc.
2490 Mariner Square Loop, Suite 150
Alameda CA 94110
Tel: 510-995-2800 Fax: 510-995-1490

LeasePak 6.2a MR2
Documentation Suite Bulletin
August 6, 2010

LeasePak Documentation Suite: Web Server Requirement

Beginning with the Documentation Suite ("DocSuite") publication coinciding with **LeasePak release 6.2a MR2**, functionality of DocSuite requires that users access the documentation from a web server. This means that users accessing DocSuite from a network share, local hard drive, or removable media such as CD or flash memory will need to now have the documentation set up on a web server to fully and correctly view DocSuite pages.

Meeting the Web Server Requirement

Clients can meet this new requirement in several ways:

Using NetSol Technologies' DocSuite Website

NetSol maintains copies for several LeasePak versions of documentation for our clients on our DocSuite website (docsuite.netsoltech.com). Clients that do not already have their username and password for this website should contact LeasePak Help Desk (help.desk@netsoltech.com) for the URL and login credentials.

Setting up an Internal Web Server

Clients who need to restrict users to internal access for documentation can set up a web server within their infrastructure for the DocSuite site. DocSuite configuration only requires a standard server and domain name setup. The server can be Apache, IIS, or other platform. For Apache users, NetSol can assist with basic setup. IIS users or those wishing more comprehensive assistance should contact LeasePak Help Desk (help.desk@netsoltech.com) representative for more information.

Using a Portable Web Server

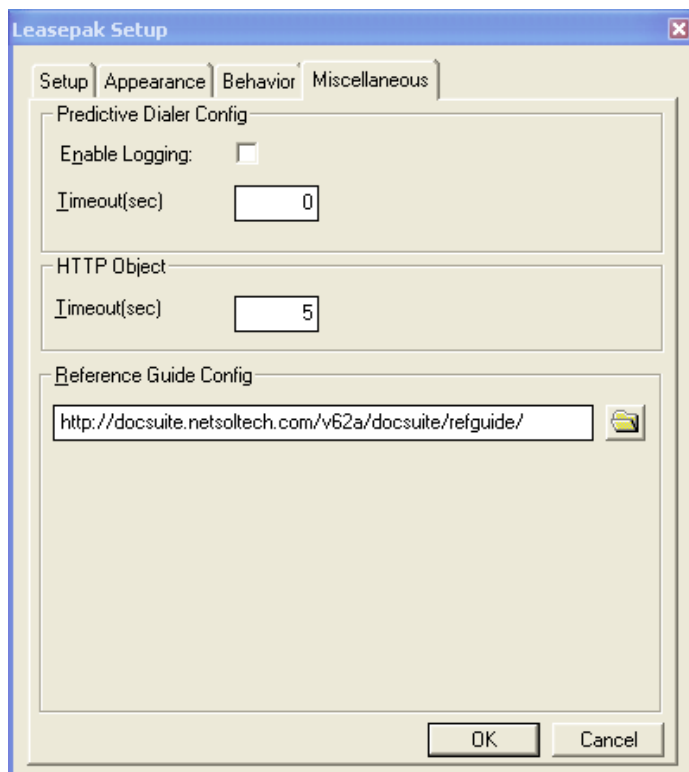
Products such as Server2Go offer a portable solution for accessing DocSuite from a web server. Server2Go is a self-contained Apache web server that runs on Windows. NetSol can provide a copy of DocSuite on Server2Go on request. This package can be copied to a hard drive, CD/DVD, flash memory device, or other location as needed.



Setting up LeasePak F1 Functionality

Accessing DocSuite from a web server requires changing the LeasePak setup parameter that specifies the location of the Reference Guide. Beginning with LeasePak 6.2a MR2, the program allows the input of a URL for this location.

To change the location, before logging on to LeasePak, from the LeasePak main menu the user or administrator must select **File/Setup** to access the LeasePak Setup window, Miscellaneous tab:



The field Reference Guide Config needs to contain the URL of the Reference Guide under the user's DocSuite website location. Depending on where this website is, this value might be:

- NetSol Technologies' website – for example:
<http://docsuite.netsoltech.com/v62a/docsuite/refguide/>
- Client's internal website – for example:
<http://www.clientsdomain.com/docsuite/refguide/>
- Server2Go localhost website – for example:
<http://127.0.0.1/refguide/>

Clients should contact LeasePak Help Desk (help.desk@netsoltech.com) for more information.